

2015 Hall of Fame



Martha Altmire
Coach
Olean High School



Robert Dinse
Athletic Director -
Wilson High School
& Section VI -
Executive Secretary



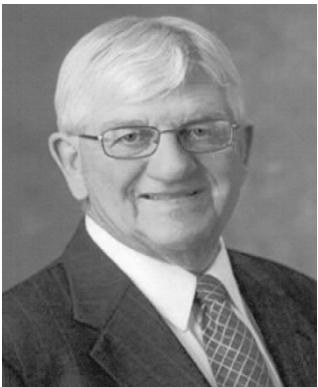
Ilio DiPaolo Scholarship Fund
Contributor



Lois Foy*
Athletic Director
Salamanca High School
& Section VI -
President and Treasurer



Chuck Funke*
Athletic Director
Iroquois High School
& Section VI -
Football Chairman



Gerald Gentner*
Coach
Williamsville South High School



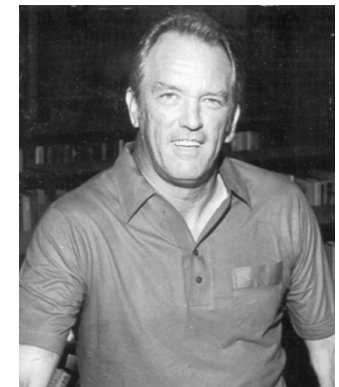
Brian Hull
Athlete
Southwestern High School



Paul Hutzler
Contributor



Walt Stefani
Coach
Orchard Park High School
Section VI Volleyball
Boys Volleyball Chairman



Jim Walker
Athletic Director
Lewiston-Porter High School
& Section VI -
Boys Basketball Chairman

(*posthumously)